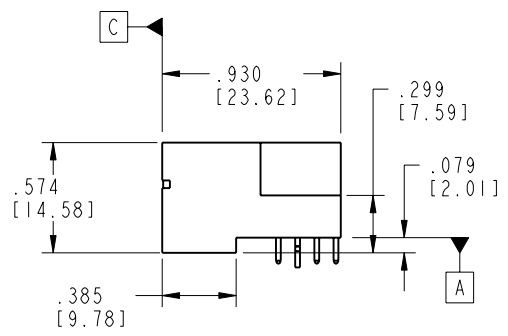
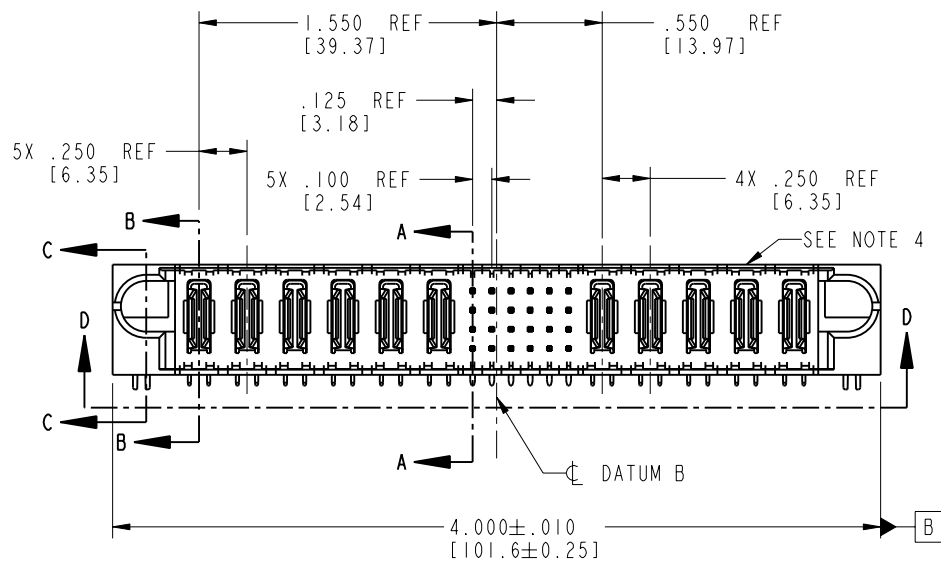


Tous droits strictement réservés. Reproduction ou communication o des liens interdite sous quelque forme que ce soit sans autorisation écrite du propriétaire. Propriété de c FCI. Droits de reproduction FCI.

All rights strictly reserved. Reproduction or issue to third parties in any form whenever is not permitted without written authority from the proprietor. Property of FCI. Copyright FCI.



PRODUCT NO.	ROWS	POWER					SIGNAL					POWER					E2		
		E1	P1	P2	P3	P4	P5	P6	1	2	3	4	5	6	P7	P8		P9	P10
51730-007-- NOTE: (3)	D C B A	HA	PA	PA	PA	PA	PA	PA	UUUUHU TTTITTT SSSSSF RRRRR	PA	PA	PA	PA	PA	PA	PA	PA	PA	HA



CODE	DIM "M" MATING LENGTH	CONTACT TYPE
E	.220 [5.59]	SIGNAL
F	.220 [5.59]	SIGNAL
G	.220 [5.59]	SIGNAL
H	.220 [5.59]	SIGNAL
R	.270 [6.86]	SIGNAL
S	.270 [6.86]	SIGNAL
T	.270 [6.86]	SIGNAL
U	.270 [6.86]	SIGNAL
PA	N/A [N/A]	POWER
HA	N/A [N/A]	HOLD-DOWN

mat'l code				SEE NOTE 2		tolerances unless otherwise specified		CUSTOMER		 www.fciconnect.com	
ltr	ecn no.	dr	date	linear	.XX±.01/0.X±0.3		COPY		 projection	title	
A	V02906	JRW	12-08-00		.XXX±.005/0.XX±0.13		 projection			6P + 24S + 5P	
B	V20009	JWS	01-14-02	angles	.XXX±.0020/0.XXX±0.051		 projection		RIGHT ANGLE SOLDER HEADER		
C	DG05-0200	SJ	06/30/05		0°±2°		 projection		product family		
D	DG05-0415	GuoJM	10/25/05	dr	J. SHAFFER	01-14-02	INCH/MM		PwrBlade	code	
				engr	M. MOSTOLLER	01-14-02	scale		size	213	
				chr	M. MOSTOLLER	01-14-02	1:1		dwg no	51730-007	
				appd	M. MOSTOLLER	01-14-02			sheet	1 of 4	
sheet index	revision sheet	D	D	D	D	D					
1	2	3	4								

cage code 22526

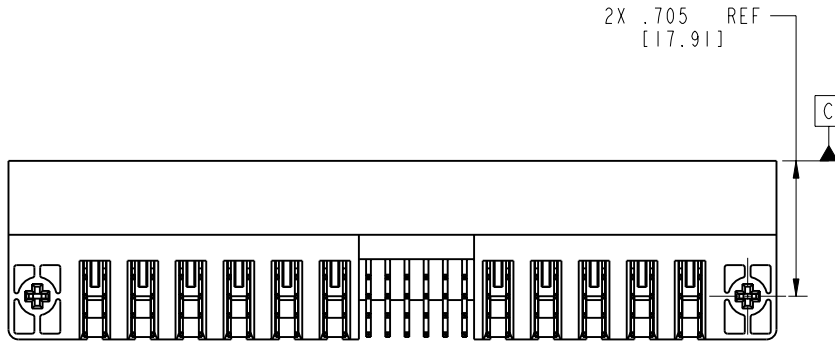
Pro/E

Tous droits strictement réservés. Reproduction ou communication o des liers interdite sous quelque forme que ce soit sans autorisation écrite du propriétaire. Propriete de c FCI. Droits de reproduction FCI.

All rights strictly reserved. Reproduction or issue to third parties in any form, whatever is not permitted without written authority from the proprietor. Property of FCI. Copyright FCI.

PRODUCT NUMBER

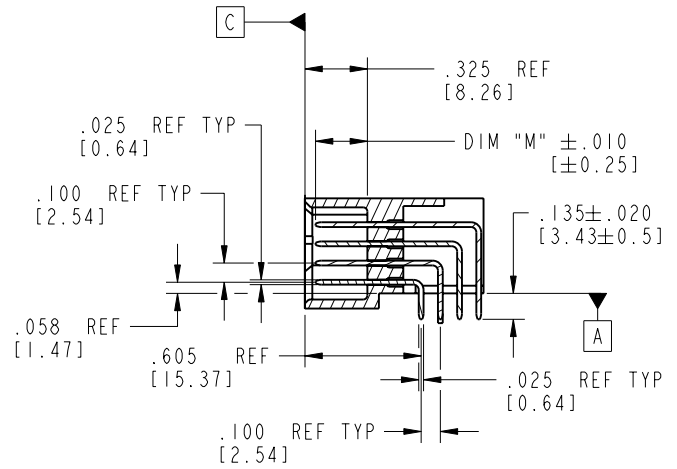
51730-007--  
NOTE: ③



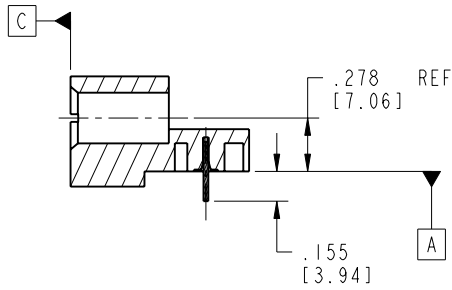
VIEW D-D

3

4



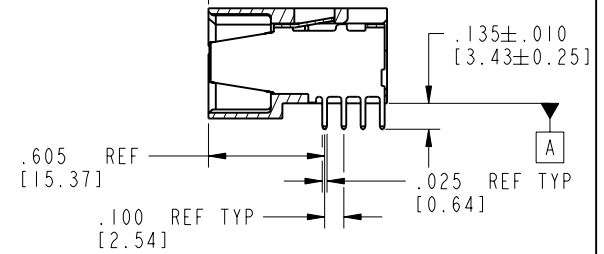
SECTION A-A



SECTION C-C

3

4



SECTION B-B

mat'l code		SEE NOTE 2		tolerances unless otherwise specified		CUSTOMER		 www.fciconnect.com	
lfr	ecn no.	dr	date	linear	.XX±.01/0.X±0.3	COPY			
D				linear	.XXX±.005/0.XX±0.13	projection		 title 6P + 24S + 5P RIGHT ANGLE SOLDER HEADER	
				angles	.XXX±.0020/0.XXX±0.051	INCH/MM			
				dr	J. SHAFFER 01-14-02	scale		product family PwrBlade code 213 size dwg no 51730-007 sheet 2 of 4	
				enrg	M. MOSTOLLER 01-14-02	1:1			
				chr	M. MOSTOLLER 01-14-02			coge code 22526	
				appd	M. MOSTOLLER 01-14-02				
sheet index	revision sheet								

Pro/E

3

4

PDM: Rev:D

STATUS: Released

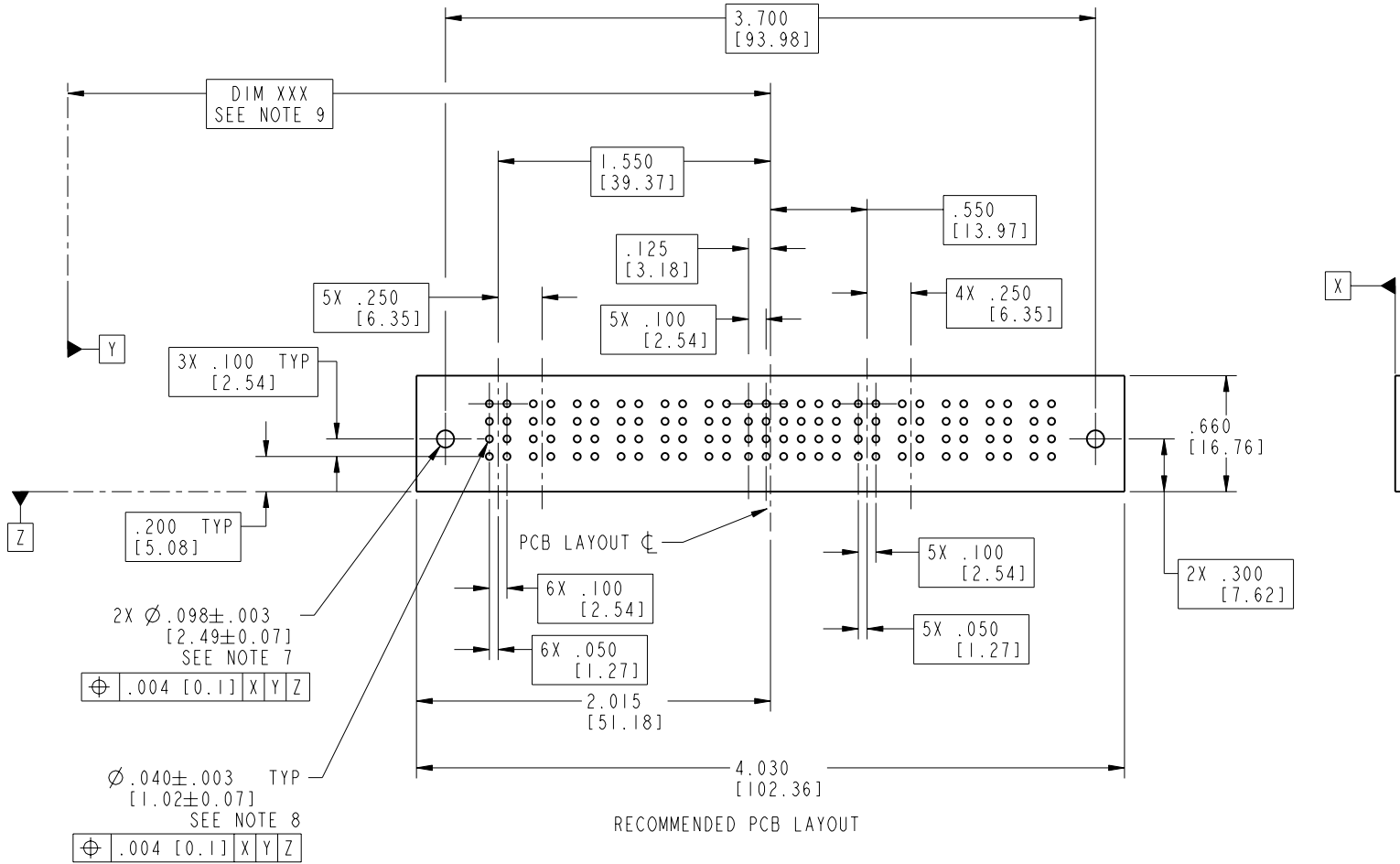
Printed: Aug 12, 2007

Tous droits strictement réservés. Reproduction ou communication o des liens interdite sous quelque forme que ce soit sans autorisation écrite du propriétaire. Propriété de c FCI. Droits de reproduction FCI.



All rights strictly reserved. Reproduction or issue to third parties in any form, whenever is not permitted without written authority from the proprietor. Property of FCI. Copyright FCI.

PRODUCT NUMBER  
51730-007--  
NOTE: ③



mat'l code				SEE NOTE 2		tolerances unless otherwise specified		CUSTOMER		 www.fciconnect.com	
lfr	ecn no.	dr	date	linear	.XX±.01/0.X±0.3	projection	COPY		title		
D				angles	.XXX±.005/0.XX±0.13		6P + 24S + 5P		RIGHT ANGLE SOLDER HEADER		
				dr	.XXX±.0020/0.XXX±0.051	INCH/MM	product family		PwrBlade		code
				enrg	0° ± 2°	scale	size		dwg no		sheet
				chr	J. SHAFFER 01-14-02	1:1	A		51730-007		3 of 4
				appd	M. MOSTOLLER 01-14-02						
sheet index	revision sheet										

cage code 22526

Pro/E

PDM: Rev:D

STATUS: Released

Printed: Aug 12, 2007

Tous droits strictement réservés. Reproduction ou communication o des liers interdite sous quelque forme que ce soit sans autorisation écrite du propriétaire. Propriete de c FCI. Droits de reproduction FCI.

**FCI**

All rights strictly reserved. Reproduction or issue to third parties in any form, whenever is not permitted without written authority from the proprietor. Property of FCI. Copyright FCI.

1 | 2

3 |

4

**PRODUCT NUMBER**

51730-007\_\_  
NOTE: ③

**NOTES:**

1. DIMENSIONS AND TOLERANCES ARE IN ACCORDANCE WITH ASME Y14.5M, 1994 UNLESS OTHERWISE SPECIFIED.

**CONNECTORS NOTES:**

② HOUSING MATERIAL: UL 94 V-0 GLASS FILLED HIGH TEMP THERMO PLASTIC  
POWER CONTACT MATERIAL: COPPER ALLOY  
SIGNAL PIN MATERIAL: COPPER ALLOY

③ PLATING:

51730-007 Singal Pin:30u"/0.76um Au OVER 50u"/1.27um Ni ON THE CONTACT AREA,  
AND 100u"/2.54um SnPb PLATING OVER 50u"/1.27um Ni ON THE TERMINATION SECTION.  
Power Pin:30u"/0.76um Au OVER 50u"/1.27um Ni ON THE CONTACT AREA,  
AND 100u"/2.54um SnPb PLATING OVER 50u"/1.27um Ni ON THE TERMINATION SECTION.

51730-007LF Singal Pin:30u"/0.76um Au OVER 50u"/1.27um Ni ON THE CONTACT AREA,  
AND 78u"/2.00um Sn PLATING OVER 50u"/1.27um Ni ON THE TERMINATION SECTION.  
Power Pin:30u"/0.76um Au OVER 50u"/1.27um Ni ON THE CONTACT AREA,  
AND 78u"/2.00um Sn PLATING OVER 50u"/1.27um Ni ON THE TERMINATION SECTION.

PART NUMBER 51730-007LF MEETS EUROPEAN UNION DIRECTIVE AND OTHER COUNTRY REGULATIONS AS DESCRIBED IN GS-22-008.


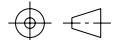
THE HOUSING WILL WITHSTAND EXPOSURE TO 260° PEAK TEMPERATURE FOR 10 SECONDS IN A WAVE SOLDER APPLICATION WITH A CIRCUIT BOARD.

4. "MANUFACTURER" NAME, P/N, AND DATE CODE TO APPEAR ON THIS SURFACE.

5. PRODUCT SPECIFICATION GS-12-149.

**PCB - NOTES:**

- 6. ALL HOLE DIAMETERS ARE FINISHED HOLE SIZE.
- 7. HOLD DOWN THROUGH HOLES ARE UNPLATED.
- 8.  $\varnothing .0453 \pm 0.0010$  [1.151 ± 0.025] DRILLED HOLES PLATED WITH 0.0003 [0.008] MIN SnPb OVER .001 [0.03] TO .003 [0.08] Cu PLATING TO ACHIEVE  $\varnothing .040 \pm .003$  [1.02 ± .07] HOLE.
- 9. "DIM XXX" TO BE DETERMINED BY THE CUSTOMER.

mat'l code				SEE NOTE 2		tolerances unless otherwise specified		CUSTOMER		 www.fciconnect.com	
lfr	ecn no.	dr	date	linear	.XX±.01/0.X±0.3		COPY		 RIGHT ANGLE SOLDER HEADER		
D					.XXX±.005/0.XXX±0.13		INCH/MM				
				angles	.XXX±.0020/0.XXX±0.051		scale		PwrBlade		213
				dr	J. SHAFFER	01-14-02	1:1		size		sheet
				enrg	M. MOSTOLLER	01-14-02			A		4 of 4
				chr	M. MOSTOLLER	01-14-02			51730-007		
				appd	M. MOSTOLLER	01-14-02					
sheet index	revision sheet										

1 | 2

Pro/E

3 |

coge code 22526

4